

You Can Only Improve What You Can Measure



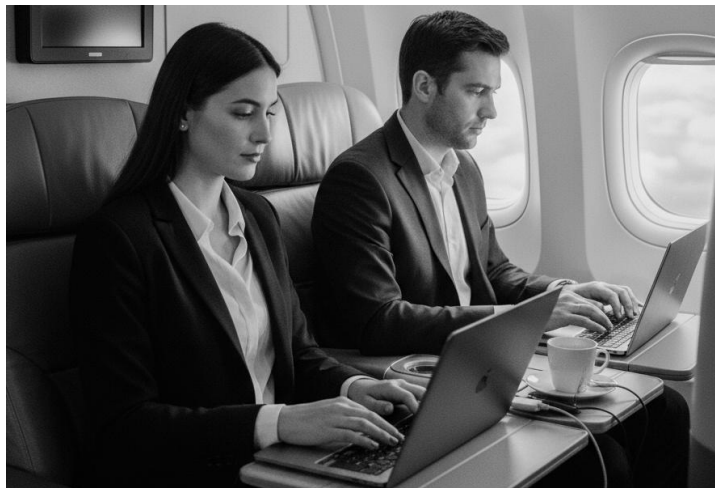
QMap[®] Inflight

Gain insight and actionable data about your inflight connectivity service by continuously monitoring the user experience—at the seat level.

We map network performance to application behavior, enabling you to more precisely understand, tune, and improve your network to deliver the best possible passenger experience

QMap Inflight, a lightweight mobile app, enables IFC providers to:

- Gather real-time performance metrics on the actual user experience
- Quickly identify and address performance issues
- Optimally tune traffic shaping rules
- Compare performance across network technologies and providers
- Assess end-to-end internet experience to/from content locations important to your connected passengers
- Predict and assess the impact of high take rates (e.g., free Wi-Fi)
- Set and monitor passenger experience-centric SLAs



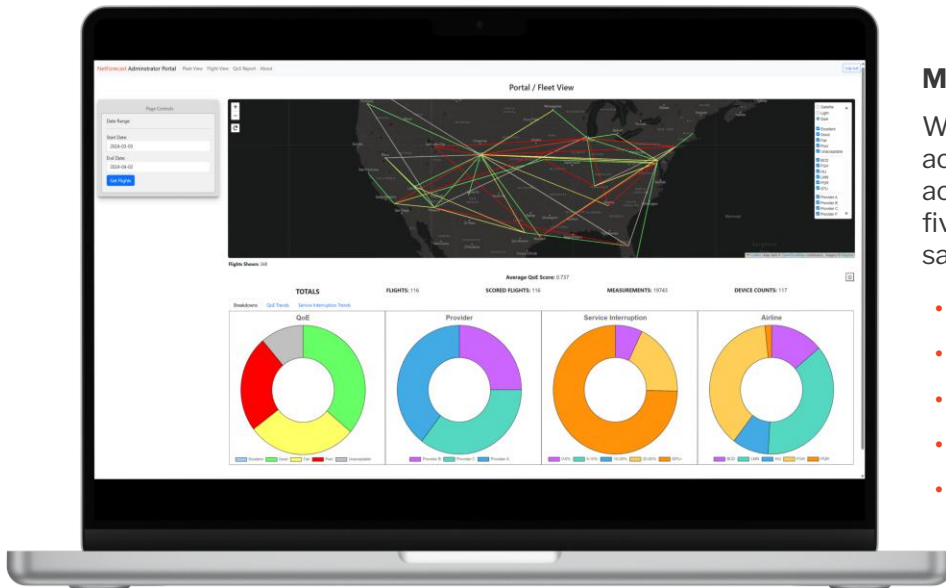
QMap Inflight collects real-time data, continually running tests from gate to gate.

Using minimal bandwidth, it works in the background—on crew and/or passenger iOS devices.

Aggregating all user data with flight position and altitude, QMap creates a range of insightful reports on end-to-end connectivity performance.

Results are delivered by a portal or by an API.

Real Data on the Actual Passenger Quality of Experience

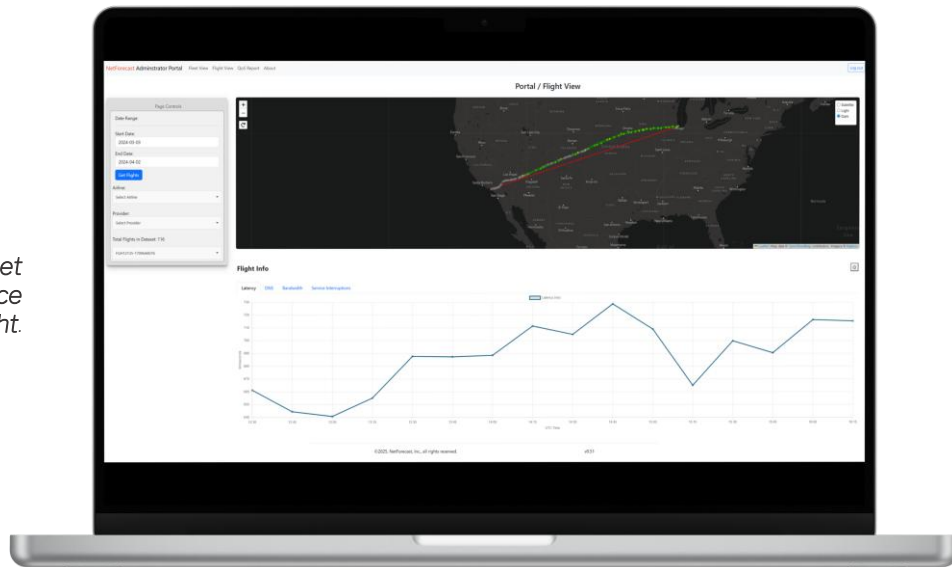


Measuring and Rating QoE

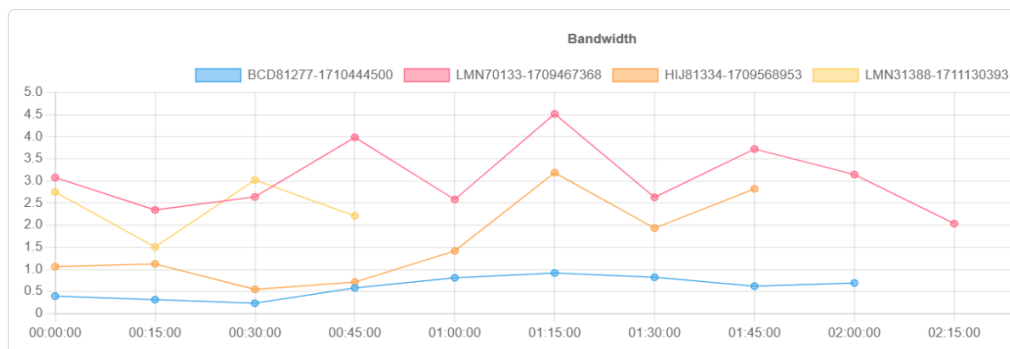
We go beyond QoS to calculate QoE, accounting for what users are actually doing. QMap Inflight tracks five key metrics that directly affect satisfaction levels:

- Latency
- Packet loss
- DNS lookup times
- Effective bandwidth
- Service Interruption/Availability

Select an individual flight to get a full picture of performance throughout a flight.



Compare Performance Between Different Flights/Aircraft/Providers



Learn More

Dive deeper into all the metrics and get your questions answered.

NetForecast

www.netforecast.com/contact