

Real-Time Application Planning Services

NetForecast, Inc.
The Application Performance Experts

Real-time Traffic Issues

Quality of Service
Application demand
Real-time bandwidth
Link Bandwidth
Link Percentage
Classification
LAN QoS implementation
WAN QoS implementation
Service Level Agreements
Endpoint connection
Power over Ethernet
IntServ (RSVP)
DiffServ
IEEE 802.1p/Q
Choosing DiffServ Markings
Data Application Impact
Using Frame Relay
Using ATM QoS
Using MPLS
Network Verification
Network Monitoring
Measuring voice quality
Measuring video quality

NetForecast helps clients assure effective performance of critical real-time business applications, with a unique, well-defined methodology that:

- Analyzes applications and their real-time traffic requirements
- Analyzes and tests networks for their ability to carry real-time traffic including:
 - Bandwidth analysis
 - Classification Methodology
 - Quality of Service Implementation
 - Actual delivered loss, jitter and latency

NetForecast delivers clear and specific recommendations to assure reliable, continuous quality transport of real-time traffic in converged IP networks.

Voice and Video over IP Network Consulting

Enterprise networks that have successfully supported data traffic for years may have difficulty supporting real-time UDP streams required for interactive voice or video conferencing. Low levels of packet loss, interface mismatches, and congested lines are easily overcome by transaction-based data transfers, and often go unnoticed during daily use. Introduction of real-time traffic immediately brings these issues to the forefront, because real-time traffic cannot sustain the data losses these problems cause.

NetForecast consults with enterprises to work through these issues in a timely manner. Our consultants can triage an existing situation and develop a plan for its correction, educate IT staff on the required methodologies necessary for supporting real-time traffic, planning, network testing, or a combination of these tasks. NetForecast's consultants have a deep technical understanding of IP networks, and how to properly configure them for real-time traffic support. NetForecast consultants can work on any of the following issues:

- Existing problem isolation and recommendations for resolution
- Network testing for ability to carry real-time (voice or video) traffic
- Education of video and networking personnel on the issues of video IP
- Transition planning for moving from ISDN to IP-based video conferencing
- Network design or design-review for IP-based voice or video conferencing
- Help in writing a Service Level Agreement for the internal networking group, and/or for a wide area networking provider

Network Audit

NetForecast uses a well defined, written methodology to evaluate IP networks for their ability to carry real-time traffic. A careful review of the network implementation and the planned services is done to determine:

- Real-time traffic transport demand
- Current link bandwidths
- Current link utilization, traffic mix and busy hour loading
- QoS implementation
- QoS classification methodology
- QoS rate settings and queuing behaviors
- Equipment specifications and software revisions

NetForecast then evaluates the network using synthetic traffic tools to test the network's ability to carry real-time traffic. Problem areas are identified, documented and debugged.

NetForecast then evaluates the impact on existing data applications of the introduction of the new real-time services.

At the end of the audit, NetForecast presents all audit results, and makes specific recommendations about network equipment, link technologies, link bandwidths, application acceleration appliances, testing tools and a testing methodology.

Benefits

Engaging NetForecast before deploying real-time applications (voice or video) allows network issues to be identified, prioritized, and resolved before they become application failures. Decisions can be made about network upgrades or

reduced real-time deployment, as best fits the enterprise. Training the enterprise network team on handling this new traffic type leads to a smooth deployment and quality management of the application once it is in place. Evaluation of data application impact eliminates surprises to mission critical applications when the real-time deployment occurs.

Engaging NetForecast to resolve an exiting problem means our extensive experience is focused on the issues stalling your deployment of real-time applications, and resolution comes quickly. Our consultants are hands-on, and have deep technical knowledge and experience on which to draw to find solutions to real-time traffic issues.

Let's Get Started

NetForecast will set up a conference call to review the nature of the issues to be addressed. The NetForecast consultant will then propose an engagement to meet the users need, and work will begin as soon as schedules allow. Pricing will be on a case basis, a flat fee for the engagement plus expenses incurred. Deliverables for the consulting case will be clearly defined in the project proposal. Our consultants can be on-site and addressing your specific issues within days of a project case being signed.

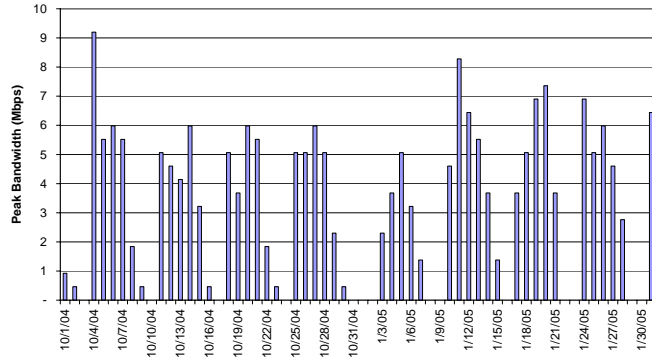


Figure 1 - Real-Time Traffic Demand per Link

Contact Information

John Bartlett – 978-884-6739 or
Peter Sevcik – 434-249-1310